

Connoisseur Inline Locking



Features

- Solid die cast construction**
 Heavyweight handle with sturdy feel
- Heavy duty sprung latching wedge**
 Positive click on closing
- Long handle**
 Greater leverage and easy to operate without catching a hand on the window
- Classic design with a contemporary twist**
 Create an elegant and stylish window
- Patented cover caps with colour coordinated finish**
 Perfectly matching components, even down to the smallest details
- Secured By Design**
 Additional peace of mind
- Key clicks into place when inserted**
 Won't fall out of the lock, even when pivoting the lever
- Supplied with screw and spindle pack**
 Everything needed for installation included



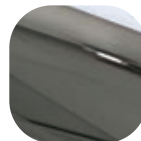
Hardex Chrome



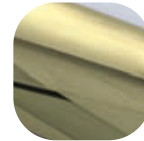
Hardex Satin



Hardex White



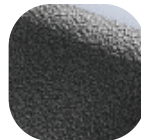
Hardex Bronze



Hardex Gold



Hardex Black



Antique Black

Connoisseur Inline Locking

Technical Information

Corrosion resistance

Meets the requirements of BS EN 1670:2007 Grade 5 (480 hours)

Operation

Endurance tested in excess of 50,000 cycles

Performance

Tested to meet the requirements of PAS 24 as part of a compliant window

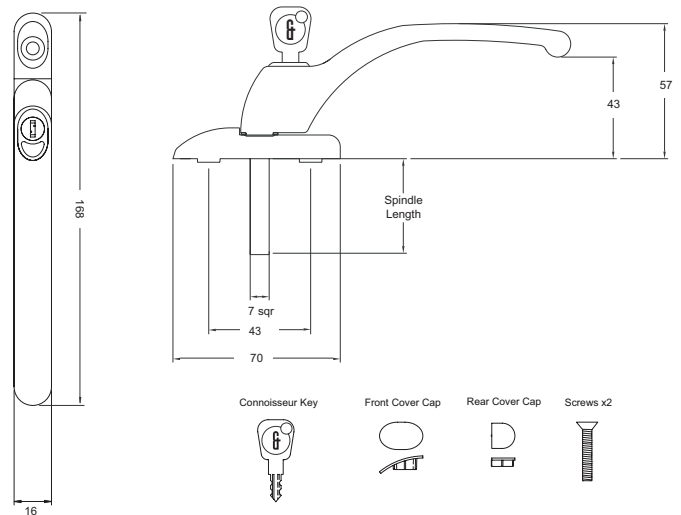
Material Specification

Handle Grip and Backplate: High quality Zinc for all Hardex finishes and Antique Black. High quality Aluminium for White, Black and Silver finishes

Coatings: Hardex Chrome, Satin, Bronze, Gold, Graphite, Antique Black, White, Black and Silver

Maintenance

For continued protection of the quality finish and appearance, we advise routine cleaning of all our external hardware. Moving parts should also be lightly lubricated at least twice a year. This procedure is particularly essential if products are used within a 25-mile radius of coastal areas or close proximity to building sites or large industrial areas, where more frequent cleaning may be required to prevent the accumulation of corrosive contaminants.



All dimensions are in mm and are nominal.
ERA reserves the right to change specification without notice.
It is the responsibility of the window manufacturer to ensure that the finished product meets any required safety and performance specification.