

# Crucial components

Doors come pre-machined with a 15 x 4mm groove to the top of the door to take intumescent strips (not supplied). Doors require grooving for intumescent after the doors have been re-sized to fit your opening. Loose pack intumescent sheets are supplied for use around the door latch or lock.

## Certification and testing

FireGuard® doors are FD30 certified, meaning they are independently tested and assessed to provide 30-minute fire protection. These doors have performed successfully in testing for fire in accordance with BS 476 Pt 22. They have also been tested for acoustic performance in accordance with BS EN ISO 140-3:1995.



## Installation

We have designed FireGuard® internal doors to fit into existing openings, so it's easy to upgrade a door without the extra time and expense associated with changing a door lining or frame\*. For a correct fit, installers must measure existing hinge and latch heights. The door must be prepared for latches and hinges (3 x 100mm hinges, which are CE marked are required). When fitting the latch the small pieces of self adhesive intumescent sheet need to be fixed to both faces of the latch.

FireGuard® doors are suitable for frames of minimum thickness 25mm x 50mm wide, manufactured from MDF, softwood or hardwood.

Door frames are normally manufactured from redwood or whitewood which meet the requirement. If in doubt, please check.

\*see detailed product instructions.

### Intermediate layers

Low-density carrier consists of recycled plant fibres, has no added formaldehyde and is relatively light-weight.

### Centre

A high-density inert core provides exceptional fire resistance, even in thin sections.

### Skin

Attractive moulded door skin.

Patent pending on door construction.



## Installation

Detailed fitting instructions are supplied and must be followed and the assembly and fitting procedures described must be strictly adhered, particularly being fire doors. Fitting of doors must be in accordance with guidance offered by BS 8000 Part 5:1990.

The top of the FireGuard® doors must not be trimmed. Sides can be trimmed by up to 4mm with 6mm off the bottom edge. Care must be taken in the fitting of locks and latches to ensure that the intumescent sheet is fitted.

Attention to detail is crucial on installation of the fire doors, including checking compatibility of door frame, the hardware and ironmongery. Technical data sheets are available on our website [www.jeld-wen.co.uk](http://www.jeld-wen.co.uk)



Beginning of independent test and assessment on the FireGuard® Moulded Fire Door. The digital clock on the right records the fire test duration.



30-minute fire protection exceeded comfortably with 44 minutes showing on the clock before the fire broke through the prototype door under test.

**JELD-WEN UK**  
Retford Road, Woodhouse Mill,  
Sheffield, South Yorkshire, S13 9WH  
T: 0845 122 2890 | F: 0114 254 2365  
E: [marketing@jeld-wen.co.uk](mailto:marketing@jeld-wen.co.uk)  
[www.jeld-wen.co.uk](http://www.jeld-wen.co.uk)

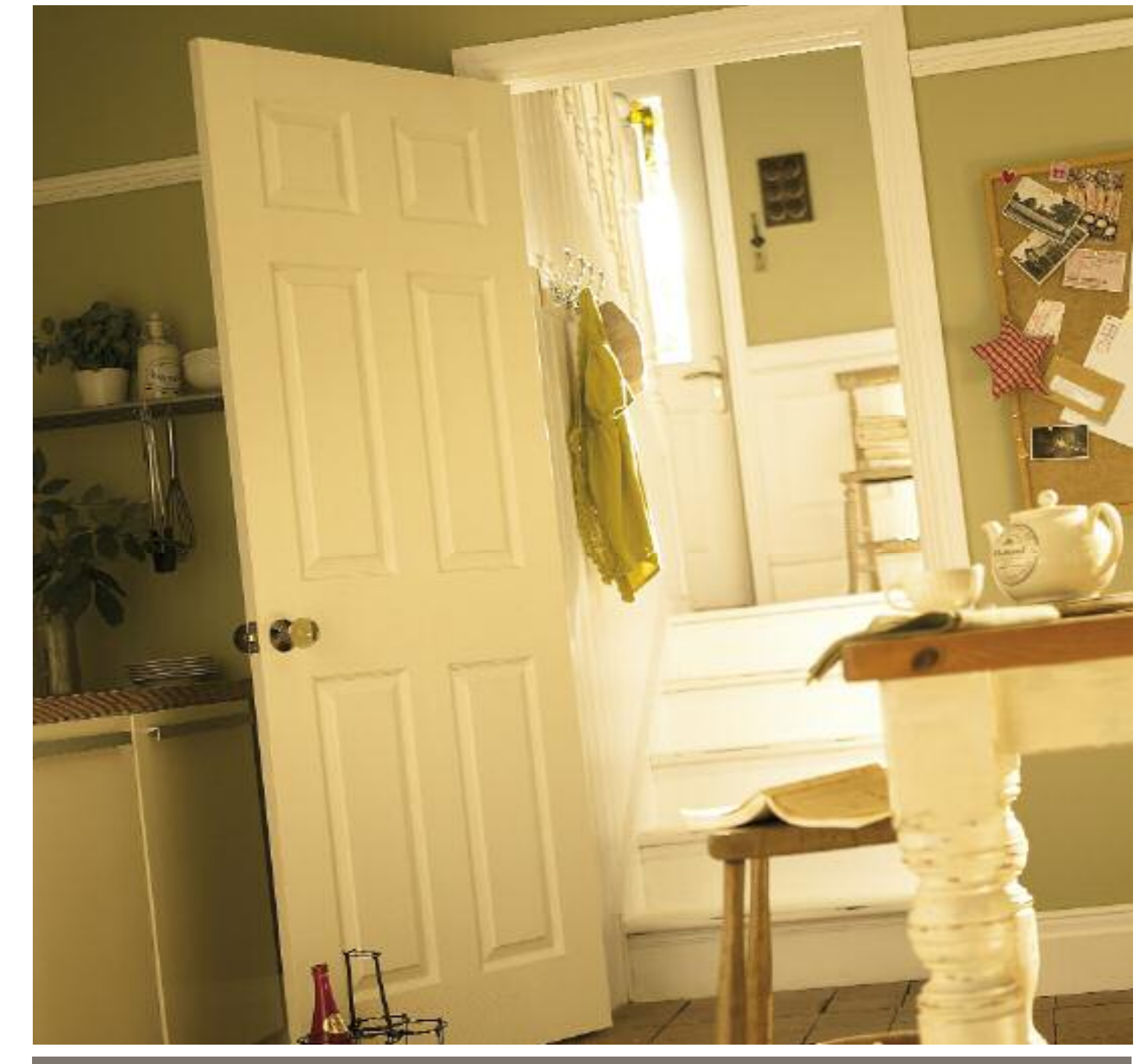
RELIABILITY for real life®



SS/NF/1009/410K/ISSUE-3/JUNE09



# Internal 35mm Fire Doors



THE SLIM LINE DOOR WITH THE FIRE RESISTANT CORE





# Safety that's simplified

Internal fire doors must be many things. Functional, durable, stylish, and of course, safe. Now they can also be easily installed.

New FireGuard® internal doors from JELD-WEN have 30-minute fire ratings to meet the latest government regulations, and each one is only 35mm thick. That means they can be used with existing frames and linings\*, making them the most convenient - and cost effective internal fire doors in the marketplace today. No need to rip out existing frames, no re-decoration required.

\*See detailed product instructions.

# Slim, chic and widely approved

We offer FireGuard® 35mm internal doors in many designs and styles - for nearly any application, so you can take a selection that's best suited to your project. The range includes various moulded doors that will make any room more eye-catching, as well as our slim and versatile real wood veneered, foil veneered, hardboard and paint grade doors. These doors are also appropriate for a range of projects, including single and multi occupancy housing. They can also be successfully used in light commercial buildings.

### Requirements

You can rest assured knowing that our FireGuard® doors are built to meet increased regulatory requirements, which require that more fire doors be installed in homes and buildings. These requirements were developed as part of the Communities and Local Government's goals to significantly reduce accidental fire-related deaths. To learn more about these goals and regulations, visit [www.communities.gov.uk](http://www.communities.gov.uk)



# Door Ranges

## Moulded FireGuard® Doors



Arlington Smooth



Cambridge Smooth



Atherton Smooth



Bostonian Woodgrain



Camden Woodgrain

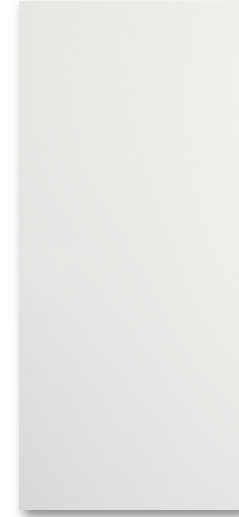


Oakfield Woodgrain

## Hardboard & Paint Grade FireGuard® Doors



Paint Grade



Hardboard

## Real Wood Veneer FireGuard® Doors



African Maple



Sapele



Beech



White Oak



Koto



Ash

## Foil Veneer FireGuard® Doors



Ash Foil Veneer



Oak Foil Veneer



Planked Oak

MOULDED FIREGUARD® DOORS		
Arlington Smooth	1981 x 686 (6'6" x 2'3")	23ARL35F
	1981 x 762 (6'6" x 2'6")	26ARL35F
	1981 x 838 (6'6" x 2'9")	29ARL35F
Atherton Smooth	1981 x 686 (6'6" x 2'3")	23ATH35F
	1981 x 762 (6'6" x 2'6")	26ATH35F
	1981 x 838 (6'6" x 2'9")	29ATH35F
Cambridge Smooth	1981 x 686 (6'6" x 2'3")	23CAMB35F
	1981 x 762 (6'6" x 2'6")	26CAMB35F
	1981 x 838 (6'6" x 2'9")	29CAMB35F
Camden Woodgrain	1981 x 686 (6'6" x 2'3")	23CMN35F
	1981 x 762 (6'6" x 2'6")	26CMN35F
	1981 x 838 (6'6" x 2'9")	29CMN35F
Bostonian Woodgrain	1981 x 686 (6'6" x 2'3")	23BTN35F
	1981 x 762 (6'6" x 2'6")	26BTN35F
	1981 x 838 (6'6" x 2'9")	29BTN35F
Oakfield Woodgrain	1981 x 686 (6'6" x 2'3")	23OFDB35F
	1981 x 762 (6'6" x 2'6")	26OFDB35F
	1981 x 838 (6'6" x 2'9")	29OFDB35F

FOIL VENEER FIREGUARD® DOORS		
Ash Foil	1981 x 686 (6'6" x 2'3")	23TOTT35F
	1981 x 762 (6'6" x 2'6")	26TOTT35F
	1981 x 838 (6'6" x 2'9")	29TOTT35F
Oak Foil	1981 x 686 (6'6" x 2'3")	23WEMB35F
	1981 x 762 (6'6" x 2'6")	26WEMB35F
	1981 x 838 (6'6" x 2'9")	29WEMB35F
Planked Oak Foil	1981 x 686 (6'6" x 2'3")	23PLOAK35F
	1981 x 762 (6'6" x 2'6")	26PLOAK35F
	1981 x 838 (6'6" x 2'9")	29PLOAK35F
HARDBOARD & PAINT GRADE FIREGUARD® DOORS		
White Hardboard	1981 x 686 (6'6" x 2'3")	23HB35F
	1981 x 762 (6'6" x 2'6")	26HB35F
Paint Grade	1981 x 838 (6'6" x 2'9")	29HB35F
	1981 x 686 (6'6" x 2'3")	23IP35F
Paint Grade	1981 x 762 (6'6" x 2'6")	26IP35F
	1981 x 838 (6'6" x 2'9")	29IP35F

REAL WOOD VENEER FIREGUARD® DOORS		
African Maple	1981 x 686 (6'6" x 2'3")	23MAP35F
	1981 x 762 (6'6" x 2'6")	26MAP35F
	1981 x 838 (6'6" x 2'9")	29MAP35F
Beech	1981 x 686 (6'6" x 2'3")	23BCH35F
	1981 x 762 (6'6" x 2'6")	26BCH35F
	1981 x 838 (6'6" x 2'9")	29BCH35F
White Oak	1981 x 686 (6'6" x 2'3")	23WOK35F
	1981 x 762 (6'6" x 2'6")	26WOK35F
	1981 x 838 (6'6" x 2'9")	29WOK35F
Koto	1981 x 686 (6'6" x 2'3")	23KOTO35F
	1981 x 762 (6'6" x 2'6")	26KOTO35F
	1981 x 838 (6'6" x 2'9")	29KOTO35F
Sapele	1981 x 686 (6'6" x 2'3")	23SAP35F
	1981 x 762 (6'6" x 2'6")	26SAP35F
	1981 x 838 (6'6" x 2'9")	29SAP35F
Ash	1981 x 686 (6'6" x 2'3")	23ASH35F
	1981 x 762 (6'6" x 2'6")	26ASH35F
	1981 x 838 (6'6" x 2'9")	29ASH35F

