

JELD WEN.

INTERIOR
DOORSET
BROCHURE



OPENING THE DOOR TO KEY MARKET SECTORS

JELD-WEN is the UK's largest timber door manufacturer with decades of experience supplying new build and renovation projects in both public and private sector markets. Our expertise lies in handling complex and different specification doorsets to meet exact project requirements and customer needs, whether large or small. As part of the global JELD-WEN group, with factories spanning across Europe and USA, we are confident to have the product expertise and market knowledge to serve and deliver our customers with superior products.

We are an established manufacturer that you and your customers can rely on, both today and in the future. Our doorset products are developed to offer practical solutions for our customers and have undergone rigorous testing to ensure high quality and high performance. Our products are certified and accredited by independent third parties to ensure compliance to a high level of safety and performance. So you can rest assured that we are committed to creating beautiful and secure spaces for your end client.

Our range of doorsets are expertly crafted in our UK factory and delivered to sites across the UK. A nationwide sales and customer service team is on hand to help you along every step of your project.



We specialise in supplying into the following sectors:

MULTI OCCUPANCY HOUSING



REFURBISHMENT & RENOVATION



CARE & RETIREMENT



APARTMENT SCHEMES



STUDENT ACCOMMODATION



CONTENTS

Introduction	2	SECUREFIT™ FLAT ENTRANCE DOORSETS	
Sustainability	4	Introduction	19
Partnership approach	5	Specification	20–21
Third party certification	6–7	Door styles	28–29
Why choose a doorset?	8	Hardware & options	36
Doorset components	9	Opening sizes	41
		SECURESET FLAT ENTRANCE DOORSETS WITH OPTIONAL TOP & SIDE LIGHTS	
READYFIT™ INTERNAL DOORSETS		Introduction	23
Introduction	11	Specification	24–25
Specification	12–13	Top and side light configurations	26
Door styles	28–30	Glazing options	27
Hardware & options	34	Door styles	28–29
Opening sizes	40	Hardware & options	37
		Opening sizes	41
READYFIT™ COMMUNAL DOORSETS		SMART ROOM ENTRANCE LOCK	38
Introduction	15	DOORSET LININGS	42
Specification	16–17	CASE STUDIES	44
Door styles	28–30	IMPORTANT INFORMATION	46
Hardware & options	35		
Opening sizes	40		



TAKING OUR RESPONSIBILITIES SERIOUSLY

JELD-WEN recognises the importance of a sustainable supply chain and we care about the future. That's why we continue to invest and promote the use of technologies and materials which help to minimise the impact on the environment.

Here are a few examples of our commitment to this sustainability journey:

- We have committed ourselves to more sustainable business practices and have adopted the ISO 14001 "Environmental Management Systems" Standard to maintain and ensure continual improvement of our environmental performance.
- All emissions from our operations are maintained within the standards required by local and national regulations.
- We work in partnership with our suppliers to ensure all of our timber is sourced in compliance with the EU Timber Regulations (EUTR)
- We operate a transport policy with the objective of reducing carbon emissions
- We have Forest Stewardship Council® (FSC®) certification which ensures responsible and ethical sourcing of timber. In addition, where FSC isn't available we have 'Programme for the Endorsement of Forest Certification' (PEFC) certification which also ensures responsible sourcing of timber. Look for the FSC & PEFC logo on our products.



Forest Stewardship Council® (FSC®) certification ensures responsible sourcing of timber. This is available on request and must be agreed prior to order. Look for FSC certified products.



Programme for the Endorsement of Forest Certification (PEFC) certification ensures responsible sourcing of timber. This is available on request and must be agreed prior to order.

- We work with suppliers to promote responsible and ethical conduct of their businesses. Additionally, we support local charitable and community causes.
- We have a programme of employee awareness, training and education across our business to ensure our commitment to sustainability is communicated and understood by our employees. We have a corporate ESG report which is available to download on our website.
- We recycle and reuse wood waste which goes to local farms to be used for animal bedding.

View our full global ESG report here:



PARTNERSHIP APPROACH

JELD-WEN will work with you and your customer to understand the project and your doorset requirements. From having competitive prices and lead-times to delivering a full range of timber doorsets with the highest technical performance without compromising environmental standards, quite simply JELD-WEN offers it all.

We collaborate with you to make your projects a reality – with a vast array of style and finish options, plus a wide range of durable hardware options. Although we specialise in volume manufacturing, many of our products can be bespoke and made to order so you can customise your doorsets to suit the project and client.

JELD-WEN have a specialist, UK-wide Account Management team who can help streamline the sales process from start to finish, so you benefit from one dedicated point of contact throughout the project. We also have a fully trained UK customer service team who can help provide solutions to your queries and ensure your projects are delivered on schedule and in budget.



CPD TRAINING AVAILABLE ON REQUEST

Our CPD training course "5 things to look for in Fire doorsets to improve long term fire safety" is accredited by CPDUK and can be completed either on-site or virtually. It focuses on how to procure fire doorsets and what to look for when doing so, including legal requirements and building regulations. It is conducted by our expert team who have years of experience in fire doorsets and the construction industry. It's a great opportunity to enhance your knowledge, sign up today.

Scan to enquire about our CPD training:



THIRD PARTY CERTIFICATION

We pride ourselves on committing to the highest standards of construction practice, evidence of which can be found in the certification and accreditations we hold.

Third-party certification is a process of testing and verifying a doorset's design, performance, manufacture and supporting documentation. JELD-WEN works closely with independent certification bodies who regularly audit our processes and quality systems. Periodic testing of our products is also mandatory to ensure ongoing compliance to the required standards.

Certification of doorsets provides crucial evidence that when correctly installed and maintained, they are fit for purpose and comply with regulations. Data sheets provide the installer with the necessary information required to assemble and fit the doorset within the scope of certification.

All certificates and associated data sheets for our certified products are available via our website. The status of our certificates can also be confirmed at www.warringtonfire.com



DUAL CERTIFICATION

JELD-WEN offer dual certification on the SecureFIT™ and SecureSET flat entrance doorsets which mean they are both fire and enhanced security rated for exceptional performance.

These certified security fire doorsets provide peace of mind that the people, property and assets within the building are protected from opportunist thieves, vandalism, attack, fire and smoke. The tests demonstrate the door's ability to resist fire for at least 30 minutes, as well as an intruder's attempts to gain entry to PAS 24 test standards.

All Secured By Design (SBD) housing developments require entrance doors to have third-party security certification. SBD is official police initiative to improve the security of buildings and their surroundings. The SecureFIT™ and SecureSET range of doorsets meet these requirements and are perfect for your next fire and security rated project.



WHY CHOOSE A DOORSET?

A doorset is a door that comes pre-hung in a frame ready to install. It is perfect for new build developments and commercial projects because they help make the build simpler, more cost effective and easier to install. They usually consist of a combination of a door leaf, frame and other essential components of a door such as hardware which are then fully assembled from a single source and from a controlled factory. A doorset saves you time on assembling these individual components on site and minimising the room for error or component mismatch.

REASONS TO CHOOSE A DOORSET:

Simplicity – buy all your components from a single source so your doorset is ready to install when it arrives on site.

Ready to install – prevents components being left on site and helps to prevent damage from other trades.

No missing components on-site

No room for error or excessive gaps – each door is perfectly hung.

Zero risk of mismatching components – rest assured your doorset adheres to regulations and/or fire and security certifications.

Higher performing doors – the doorsets have been 3rd party tested, audited and certificated to uphold a high level of performance for fire and security regulations.

After-sales support from a single supplier – make best use of your time and increase your purchasing power from using one supplier.

A more faster and seamless installation – quick to fit meaning your project costs will decrease.



DOORSET COMPONENTS



1	Frame	6	Door closer	11	Intumescent seal
2	Security chain	7	Hinges	12	Drop down seal
3	Latch	8	Viewer	13	Concealed aluminium threshold plate
4	Handle	9	Door slab		
5	Architrave	10	Letter plate		

Image for illustration purposes only. Please refer to individual product pages for product specification.



WHY CHOOSE THIS PRODUCT?

An internal doorset solution to save time and cost of installation

READYFIT™ INTERNAL

INTERNAL DOORSETS

The ReadyFIT™ timber doorset is designed specifically for internal applications and is a cost-effective solution for fitting a door and lining as quickly and easily as possible. ReadyFIT™ doorsets are available as single doorset or as pair*, in a wide variety of door styles including FD30 & FD60 fire rated options.

Supplied as a pre-assembled set with hinges, choice of latch, door linings and door stop, the ReadyFIT™ doorset is a smart solution to save time, reduce cost and ensure quality on your next project. ReadyFIT™ single doorsets can be supplied right or left hand hung as per your requirements.

PRODUCT FEATURES:

- Choose from a wide range of designs included popular moulded, paint grade premium or laminate finishes.
- ReadyFIT™ door linings are manufactured using moisture resistant MDF and finished in a white foil wrap which gives a perfect finish for final decoration on site. Architraves and doorstops are also supplied to the same finish and are fully machined and packed with the doorset.
- The door stop groove in the lining facilitates the concealed screw-fixing of the lining to the structural opening.

- Fixing brackets are pre-fitted to the side of the linings for ease of installation and a solid reliable fixing system through the lining into the structural opening.
- Fire doorsets are available with either a 30-minute fire rating (FD30), supplied with MDF linings, or a 60-minute fire rating (FD60) which are supplied in hardwood door frames. Available with standard intumescent strips or both intumescent and smoke seals fitted to the head and jambs of the lining or door frame.

*Doorset pairs are supplied unassembled for ease of handling.





STANDARD SPECIFICATION

- 1 HINGES**
Three 100mm grade 10 hinges in bright nickel, satin, matt black or matt brass finishes. In softwood and hardwood frames.
- 2 LATCH OR BATH LATCH**
65mm tubular latch or 65mm bath latch – in bright polished steel.
- 3 LINING**
25mm MDF foil wrapped linings in a choice of depths:

77mm / 90mm / 95mm / 100mm / 115mm / 120mm
125mm / 130mm / 140mm / 150mm
- 4 DOOR STOPS**
Either 27mm or 71mm according to the lining depth. (supplied loose)

For a full list of hardware options, see page 34

FIRE DOORSET SPECIFICATION

As standard specification but modified for fire performance requirements:

- 1 INTUMESCENT STRIP**
Supplied with an FD30 or FD60 fire rating.
- 2 HINGES**
FD30 rated doorsets three 100mm grade 10 hinges – in bright nickel finish.

FD60 rated doorsets three 100mm grade 13 hinges – in bright nickel finish.
- 3 LINING & FRAME**
FD30 MDF foil wrapped lining in a choice of depths:

77mm / 90mm / 95mm / 100mm / 115mm / 120mm
125mm / 130mm / 140mm / 150mm

FD60 hardwood frame with an 87mm depth
- 4 DOOR DESIGN**
For FD30 ratings, choose from a Moulded, paint grade premium or laminate design.

For FD60 ratings, choose from a Moulded, paint grade premium or laminate design.



WHY CHOOSE THIS PRODUCT?
 The ideal doorset for communal and service areas

READYFIT™ COMMUNAL

COMMUNAL DOORSETS

The ReadyFIT™ pre-assembled communal doorset has been specifically developed for cross corridor, lobby and day-to-day access areas.

Fire rated to FD30 or FD60 and available in a wide range of finishes and glazing options, included popular Moulded, paint grade premium and laminate designs.

PRODUCT FEATURES:

- Pre-primed FD30 softwood door frames and unfinished FD60 door frames in hardwood ready for decoration on site. Pre-fitted with intumescent and smoke seals as standard.
- Available with pre-mitred architraves in a range of designs.
- A wide range of optional hardware is available including door closers, push and pull handles, and kick plates. See page 35 for details.

RISER DOORSETS

To complement the communal doorset range, JELD-WEN can also supply riser doorsets to conceal and hide services.

They are supplied as a pre-assembled set complete with hinges, MDF door linings and door stop.

PRODUCT FEATURES:

- Door linings are manufactured using moisture resistant MDF and finished in a white foil wrap which gives a perfect finish for final decoration on site. Architraves and doorstops are supplied to the same finish as the linings and are fully machined and packed with the doorset.
- A number of hardware options are available including fire brigade lock and sash lock. See page 35 for details.



All fire doorsets are independently tested and certified

COMMUNAL STANDARD SPECIFICATION

- 1 HINGES**
Three 100mm grade 13 hinges – in bright nickel.
- 2 DOOR FRAME**
FD30 pre primed softwood frame with fixed stop.

FD60 unfinished hardwood frame with fixed stop.
- 3 INTUMESCENT AND SMOKE SEAL**
Pre installed within frame.
- 4 DOOR DESIGN**
Choose a Moulded, Paint grade premium, (FD30 only) or laminate finish.

RISER STANDARD SPECIFICATION

- 1 HINGES**
Three 100mm grade 10 hinges – in bright nickel finish.
- 2 DOOR FRAME**
25mm MDF foil wrapped linings in a choice of depths:

77mm / 90mm / 95mm / 100mm/ 115mm / 120mm

125mm / 130mm / 140mm / 150mm
- 3 INTUMESCENT AND SMOKE SEAL**
Pre installed within frame.
- 4 DOOR DESIGN**
Choose a Moulded, Paint grade premium, (FD30 only) or laminate finish.

For a full list of hardware options, see page 35





WHY CHOOSE THIS PRODUCT?

A third party, dual certified doorset for fire and security rated applications

SECUREFIT™

FLAT ENTRANCE DOORSETS

SecureFIT™ flat entrance doorsets meet the requirements of Secured by Design. This is achieved through third party dual certification for fire, smoke and security performance, giving you confidence that our doorsets conform to building regulations.

Available in popular Moulded, paint grade premium and laminate finishes, these doors can be matched to other JELD-WEN doorsets within the property to offer a co-ordinated and high-quality look throughout.

PRODUCT FEATURES:

- FD30 door frames are manufactured using primed softwood, unfinished ready for final decoration on site. Available with intumescent strips and smoke seals fitted to the head and jambs of the door frame, supplied in either white or brown.
- All SecureFIT™ doorsets are supplied as standard with a high quality multi-point lock, handle and cylinder, hinges, security chain, door viewer and drop down seal.

- A range of optional hardware is also available including letter plates, security chain, door knocker, kick plates and numerals. An additional DDA compliant viewer is also available if required. See page 36 for details.
- SecureFIT™ doorsets can also help achieve energy efficiency standards on a project with U values as low as 2.0 on the FD30 moulded and flush door types.



All SecureFIT™ doorsets are independently tested and certified through the BWF Certifire and Certisecure schemes



Meets the requirements of PAS 24 and Secured By Design

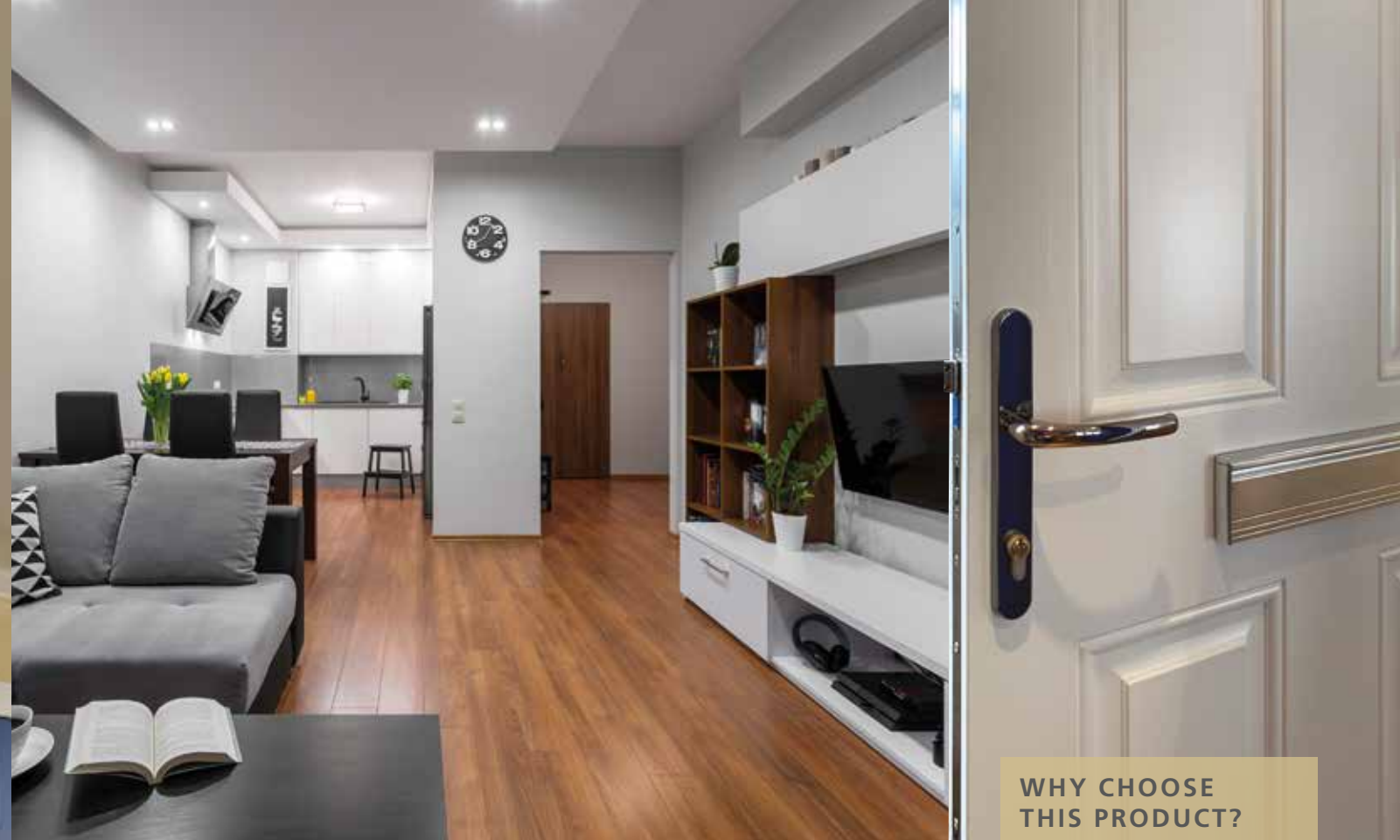


STANDARD SPECIFICATION

- 1 VIEWER**
Silver wide angled door viewer.
- 2 MULTI-POINT LOCK**
- 3 HANDLE**
Lever handle in satin silver or chrome.
- 4 HINGES**
Supplied with three satin silver or chrome grade 13 hinges.
- 5 DROP DOWN SEAL**
Concealed automatic drop down seal.
- 6 INTUMESCENT & ACOUSTIC SEALS**
Fire, smoke and acoustic seals pre-installed into the frame.
- 7 DOOR DESIGN**
Choose a Moulded, Paint grade premium or laminate finish.
- 8 SECURITY CHAIN**
(on inside of doorset).
- 9 ALUMINIUM THRESHOLD PLATE**
(FD30 only).

For a full list of hardware options,
see page 36





WHY CHOOSE THIS PRODUCT?

A dual certified interior doorset solution with glazing and colour options

SECURESET

FLAT ENTRANCE DOORSET WITH OPTIONAL TOP AND SIDE LIGHTS

The SecureSET flat entrance doorset range is tailored to provide the perfect solution for both new and refurbishment applications. Available in a wide range of standard and made to measure sizes, with the flexibility to include side and top lights. SecureSET flat entrance doorsets meet the requirements of Secured by Design. This is achieved through third party dual certification for fire, smoke and security performance, giving you confidence that our doorsets conform to building regulations.

The doorsets are available in a variety of designs and colour finishes to complement our ReadyFIT™ doorset range and other JELD-WEN doors in the project.

PRODUCT FEATURES:

- Made to measure options available to suit the specific requirements of your project.
- Bidirectionally fire tested including glazed screens with all hardware and glazing options.
- Glazing options include insulated and non insulated glass solutions.
- A wide range of high quality hardware options available, see page 37 for details.

DOOR COLOUR OPTIONS AVAILABLE

Moulded and paint grade doors are available in a range of standard colours or choose your own RAL colour (subject to MOQ).

		
Dark Red RAL 3001	Sapphire Blue RAL 5003	Forest Green RAL 6028
		
Dusky Grey RAL 7037	Slate Grey RAL 7015	Black RAL 9017



All SecureSET™ doorsets are independently tested and certified through the BWF Certifire and Certisecure schemes



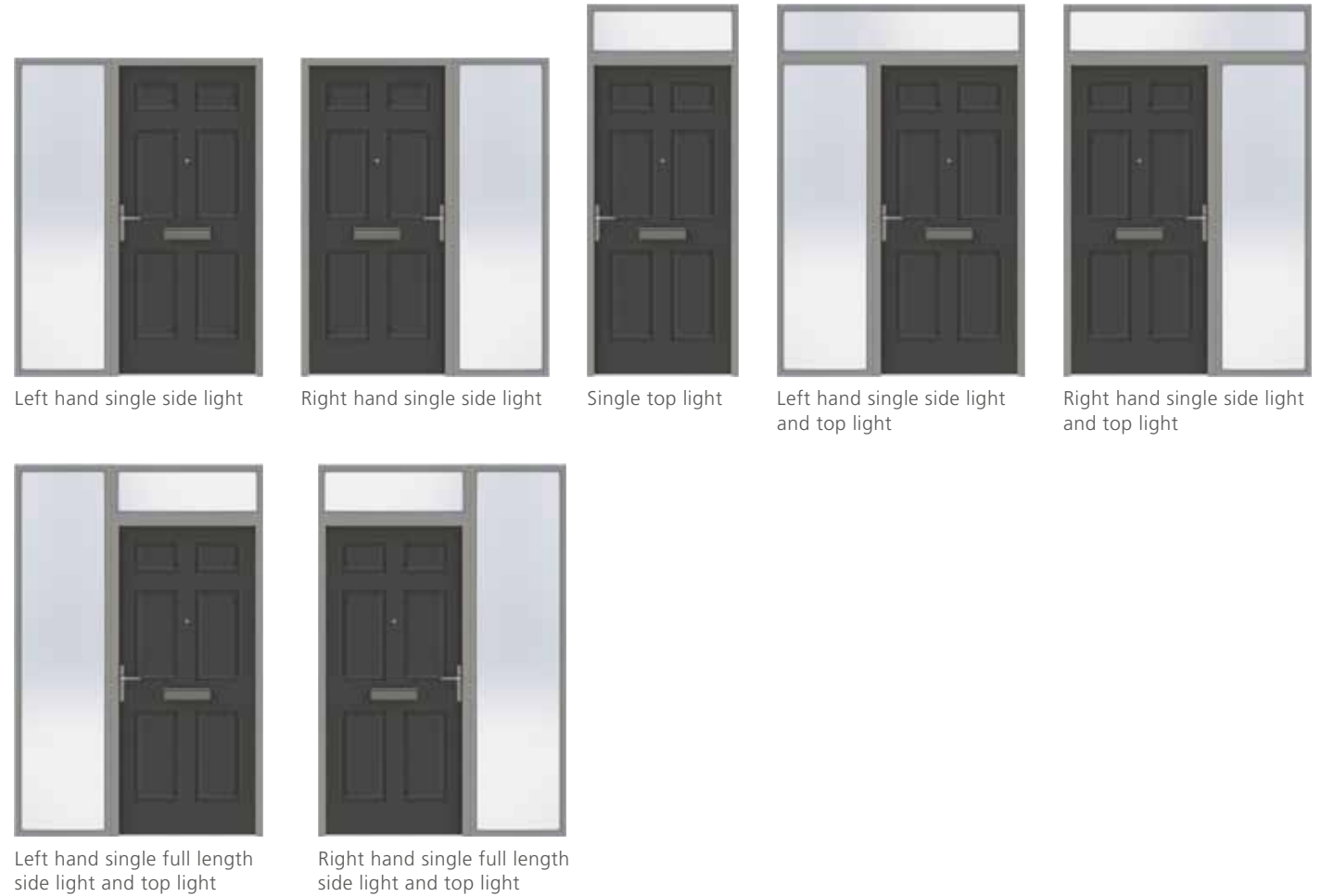
Meets the requirements of PAS 24 and Secured By Design



STANDARD SPECIFICATION

- 1 HANDLE & CYLINDER**
A satin silver handle and 3 star cylinder with thumb-turn.
- 2 HINGES**
Three grade 13 fire & security rated hinges, in a choice of satin silver, polished silver or gold.
- 3 DROP DOWN SEAL**
Concealed drop down seal.
- 4 COMBINED INTUMESCENT, SMOKE & ACOUSTIC PERIMETER SEALS**
- 5 MULTI-POINT LOCK**
Multi-point hook lock.
- 6 SECURITY CHAIN**
- 7 VIEWER**
Silver wide angled door viewer.
- 8 DOOR DESIGN**
Choose a Moulded, Paint grade premium or laminate finish.
- 9 ALUMINIUM THRESHOLD PLATE**
(10mm or 5mm option)

For a full list of hardware options, see page 37



TOP AND SIDE LIGHT CONFIGURATIONS

30 minute fire rated and PAS24 approved side and top lights are available in multiple designs including full height light configurations to cater for your project requirements.

GLASS SPECIFICATION:

Side lights are supplied as modular units complete with E130 glass (fire integrity, insulated and laminated) to help limit heat radiation to the escape route in the event of a fire and ensure a high level of security performance, in line with building regulations.

Top light units are supplied as modular units with EW30 glass (fire integrity and laminated) as standard, which has been proven to meet the requirements for both fire and security performance. E130 glass is optional.

All modular glazed units have been specially designed for easy removal of glass during installation. Glazed units are supplied partially glazed, with accompanying security screws and pre-piloted glazing beads for a quick and easy final fit.

Our modular doorset & glazed units are supplied with all the fixings required to complete the installation on site (excl. wall fixings).

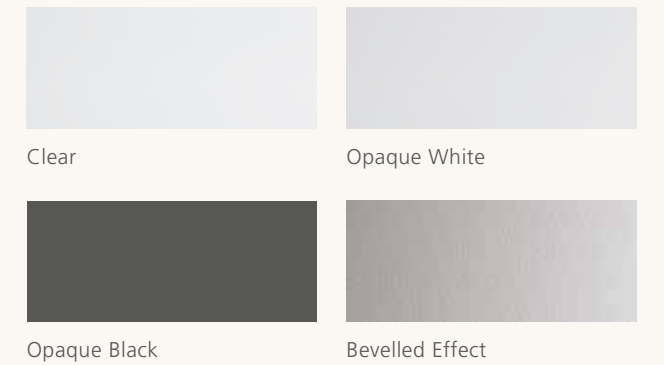


GLAZING FINISH OPTIONS

Glazed units are available in Clear, Opaque, Block Colour and Bevelled effect designs (Bevelled effect glass only available in E130 glass options).

Side light units with a mid rail can have a combination of glazing finish options to suit your requirements.

Block colour options are available on request in a wider range of colour finishes to meet the requirements of your project.



DID YOU KNOW?

In accordance to Building Regulations, the glass in a side light between a dwelling and an escape route is required to be insulated to aid the safe evacuation in the event of a fire. Further guidance can be found in Approved Document B.

DOOR DESIGNS

MOULDED PANEL



Bostonian ● Oakfield ● Arlington ● Atherton ● Cambridge ● Camden ● Rockport® ●

REAL WOOD VENEER **Available from Spring 2024*

SELECTION RANGE



Linea ● Newark ● Ladder ● FUSION White Oak ● FUSION Walnut ● INLAY White Oak

STANDARD RANGE



Ash ● Walnut ●

MATCHED RANGE



White Oak ● Walnut ●

PAINT GRADE



Paint Grade Premium

LAMINATE (standard range)



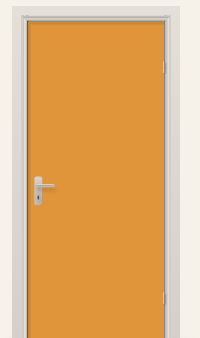
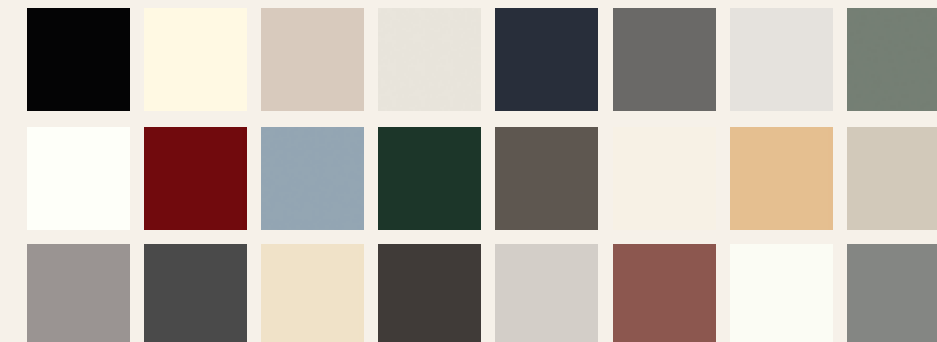
Carini ● Corbridge ● Denver ● Finline ● Gladstone ● Sorano ● Whiteriver

CHOOSE FROM 50 DIFFERENT LAMINATE FINISHES



We now have access to an extended range of up to 50 laminate finishes including different woodgrains, patterns and colours (subject to minimum order quantity and lead times).

- ✓ DURABLE
- ✓ SCRATCH RESISTANT
- ✓ EASY TO CLEAN



Please visit www.jeld-wen.co.uk/laminates for more information.

DOOR DESIGNS

MOULDED GLAZED FIRE *Please speak with your account manager to discuss available options.



1 Side Mid/Lower (Lock Side)

1T (Lock Side)

1 Side Full (Lock Side)

1T Full Height (Lock Side)

2T

LAMINATE & PAINT GRADE GLAZED FIRE



GC01

GC04

GC05

GC06

GC07

GC08



GC09

GC10

GC11

GC12

GC13

GC14



AVAILABLE PRODUCT RANGE

		READYFIT™ INTERNAL											
		PANEL						PAIR					
		UNGLAZED			GLAZED			UNGLAZED			GLAZED		
Range	Skin	NFR	FD30	FD60	NFR	FD30	FD60	NFR	FD30	FD60	NFR	FD30	FD60
MOULDED	Bostonian	✓	✓	✓	⊘	⊘	⊘	✓	✓	⊘	⊘	⊘	⊘
	Oakfield	✓	✓	✓	⊘	⊘	⊘	✓	✓	⊘	⊘	⊘	⊘
	Arlington	✓	✓	✓	⊘	⊘	⊘	✓	✓	⊘	⊘	⊘	⊘
	Atherton	✓	✓	✓	⊘	⊘	⊘	✓	✓	⊘	⊘	⊘	⊘
	Cambridge	✓	✓	✓	⊘	⊘	⊘	✓	✓	⊘	⊘	⊘	⊘
	Camden	✓	✓	✓	⊘	⊘	⊘	✓	✓	⊘	⊘	⊘	⊘
	Rockport	✓	✓	✓	⊘	⊘	⊘	✓	✓	⊘	⊘	⊘	⊘
	Linea	✓	✓	✓	⊘	⊘	⊘	✓	✓	⊘	⊘	⊘	⊘
	Newark	✓	✓	✓	⊘	⊘	⊘	✓	✓	⊘	⊘	⊘	⊘
	Ladder	✓	✓	✓	⊘	⊘	⊘	✓	✓	⊘	⊘	⊘	⊘
LAMINATE	Carini	✓	✓	✓	⊘	✓	✓	✓	✓	✓	⊘	✓	✓
	Corbridge	✓	✓	✓	⊘	✓	✓	✓	✓	✓	⊘	✓	✓
	Denver	✓	✓	✓	⊘	✓	✓	✓	✓	✓	⊘	✓	✓
	FineLine	✓	✓	✓	⊘	✓	✓	✓	✓	✓	⊘	✓	✓
	Gladstone	✓	✓	✓	⊘	✓	✓	✓	✓	✓	⊘	✓	✓
	Sorano	✓	✓	✓	⊘	✓	✓	✓	✓	✓	⊘	✓	✓
	Whiteriver	✓	✓	✓	⊘	✓	✓	✓	✓	✓	⊘	✓	✓
PAINT GRADE	Paint grade premium	✓	✓	✓	⊘	✓	✓	✓	✓	⊘	⊘	✓	⊘

READYFIT™ COMMUNAL												SECUREFIT	SECURESET
PANEL						PAIR							
UNGLAZED			GLAZED			UNGLAZED			GLAZED				
NFR	FD30	FD60	NFR	FD30	FD60	NFR	FD30	FD60	NFR	FD30	FD60	FD30	FD30
✓	✓	✓	⊘	⊘	⊘	✓	✓	⊘	⊘	⊘	⊘	✓	✓
✓	✓	✓	⊘	⊘	⊘	✓	✓	⊘	⊘	⊘	⊘	✓	✓
✓	✓	✓	⊘	⊘	⊘	✓	✓	⊘	⊘	⊘	⊘	✓	✓
✓	✓	✓	⊘	⊘	⊘	✓	✓	⊘	⊘	⊘	⊘	✓	✓
✓	✓	✓	⊘	⊘	⊘	✓	✓	⊘	⊘	⊘	⊘	✓	✓
✓	✓	✓	⊘	⊘	⊘	✓	✓	⊘	⊘	⊘	⊘	✓	✓
✓	✓	✓	⊘	⊘	⊘	✓	✓	⊘	⊘	⊘	⊘	✓	✓
✓	✓	✓	⊘	⊘	⊘	✓	✓	⊘	⊘	⊘	⊘	✓	✓
✓	✓	✓	⊘	⊘	⊘	✓	✓	⊘	⊘	⊘	⊘	✓	✓
✓	✓	✓	⊘	⊘	⊘	✓	✓	⊘	⊘	⊘	⊘	✓	✓
✓	✓	✓	⊘	⊘	⊘	✓	✓	⊘	⊘	⊘	⊘	✓	✓
✓	✓	✓	⊘	⊘	⊘	✓	✓	⊘	⊘	⊘	⊘	✓	✓
✓	✓	✓	⊘	⊘	⊘	✓	✓	⊘	⊘	⊘	⊘	✓	✓

KEY	
NFR	Non fire rated
✓	Available to order
⊘	Not available

HARDWARE

HINGES



1

HANDLES & KNOBS



4



5



6



7



8



9



10



11



12



13



14



15



16



17



18



19



20



21

- 1 GRADE 10 HINGES, (Bright nickel, satin, matt black or matt brass)
- 2 NICKEL LATCH & KEEP
- 3 BATH LATCH & KEEP
- 4 NERA LEVER HANDLE (Satin)
- 5 CARLTON LEVER HANDLE (Satin)
- 6 PLAZA LEVER HANDLE (Satin)
- 7 SPIRA LEVER HANDLE (Satin)
- 8 TREVIRI LEVER HANDLE (Satin)

- 9 CURVED LEVER HANDLE (Satin)
- 10 PHILADELPHIA LEVER HANDLE (Satin)
- 11 TOLEDO LEVER HANDLE (Matt black)
- 12 TOLEDO LEVER HANDLE (Satin chrome)
- 13 TOLEDO LEVER HANDLE (Polished chrome)
- 14 LEON LEVER HANDLE (Matt black)
- 15 LEON LEVER HANDLE (Satin chrome)
- 16 LEON LEVER HANDLE (Polished chrome)

- 17 BILBAO LEVER HANDLE (Matt black)
- 18 BILBAO LEVER HANDLE (Satin chrome)
- 19 BILBAO LEVER HANDLE (Polished chrome)
- 20 TURN & RELEASE (Satin) – with/without indicator pack
- 21 DISABILITY TURN & RELEASE (Satin) – with/without indicator pack

LATCHES

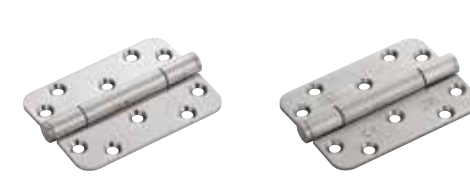


2



3

HINGES



1



4



5



6



7



8



9



10



11



12



13



14



15



16

LOCKS, CYLINDERS & ESCUTCHEON



2



3

HANDLES, PUSH & KICK PLATES

OTHER

- 1 GRADE 13 HINGES (Polished or satin)
- 2 DIN LATCH – 55mm Backset
- 3 DIN EURO SASH LOCK – 55mm Backset
- 4 DIN EURO DEAD LOCK – 60mm Backset
- 5 KEY / KEY EURO CYLINDER (Satin)
- 6 KEY / THUMB EURO CYLINDER (Satin)
- 7 KEY HALF EURO CYLINDER (Satin)
- 8 EURO CYLINDER ESCUTCHEON

- 9 FB2 LOCK
- 10 DIGIT CODE LOCK
- 11 EURO CYLINDER FINGER PULL (Satin)
- 12 300mm BAR PULL HANDLE (Satin)
- 13 350mm FINGER PUSH PLATE
- 14 150mm KICK PLATE (Satin)
- 15 LEVER ACTION FD30 FLUSH BOLT
- 16 OVERHEAD SURFACE MOUNTED CLOSER

HARDWARE

HINGES



1

LOCKS



2



3



4

HANDLES



5

OTHER



6



7



8



9



10



11

- 1 GRADE 13 HINGES (Polished or satin)
- 2 MULTI-POINT LOCK
- 3 1* TS007 KEY/THUMB CYLINDER
- 4 1* TS007 KEY/KEY CYLINDER
- 5 2* TS007 SECURITY HANDLE – (Polished or satin)
- 6 SECURITY CHAIN

- 7 SPY VIEWER
- 8 ACOUSTIC DROP DOWN SEAL
- 9 TS008 SECURITY LETTER PLATE (Polished or Satin)
- 10 SURFACE MOUNTED OVERHEAD CLOSER
- 11 ALUMINIUM THRESHOLD PLATE (FD30 only)

HINGES



1

LOCKS



2



3



4

HANDLES



5

OTHER



6



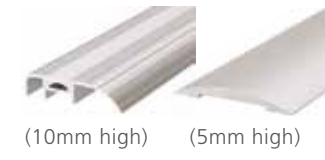
7



8



9



10



11



12



13

- 1 GRADE 13 HINGES (Polished or satin)
- 2 MULTI-POINT LOCK – 3 HOOK POINTS
- 3 3* TS007 SECURITY CYLINDER (Key/Thumb)
- 4 3* TS007 SECURITY CYLINDER (Key/Key)
- 5 BALMORAL LEVER HANDLES (Polished or satin)
- 6 SPY VIEWER
- 7 SECURITY CHAIN

- 8 ACOUSTIC DROP DOWN SEAL
- 9 TS008 SECURITY LETTER PLATE (Polished or satin)
- 10 ALUMINIUM THRESHOLD PLATE (10mm or 5mm option)
- 11 FD30 SURFACE MOUNTED OVERHEAD CLOSER
- 12 FD30 CONCEALED OVERHEAD CLOSER
- 13 CONTEMPORARY DOOR KNOCKER (Polished)

INTUMESCENT OPTIONS ACROSS ALL DOORSETS



INTUMESCENT, SMOKE SEAL, ACOUSTIC & WEATHER STRIP (with softwood doorset)



INTUMESCENT & SMOKE SEAL (with FD60 hardwood doorset)

ARCHITRAVE OPTIONS ACROSS ALL DOORSETS



OGEE (50 & 69mm)



TORUS (59mm)



TWICE ROUNDED (47 & 69mm)



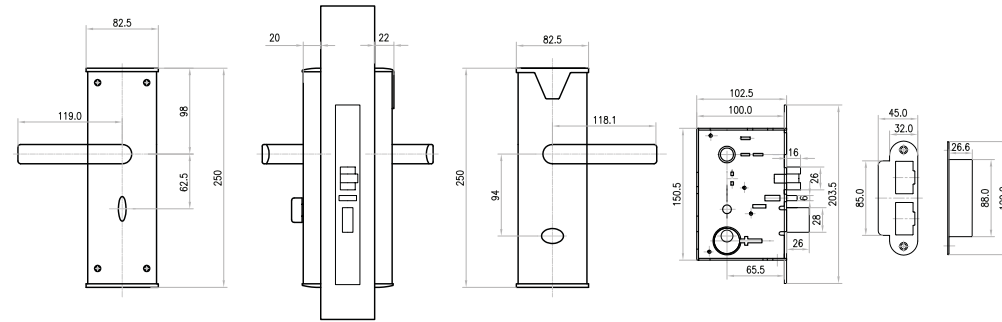
OVOLO (69mm)

SMART ROOM ENTRANCE LOCKS

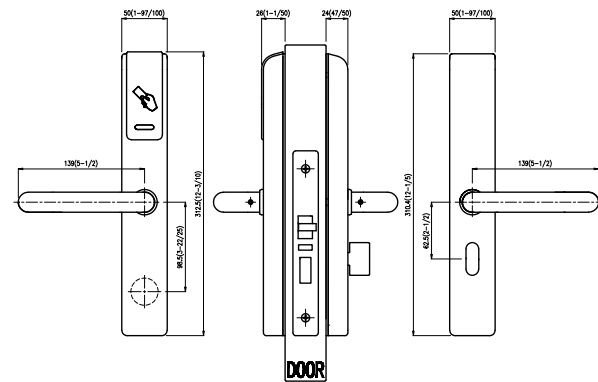
AVAILABLE IN READYFIT™ INTERNAL



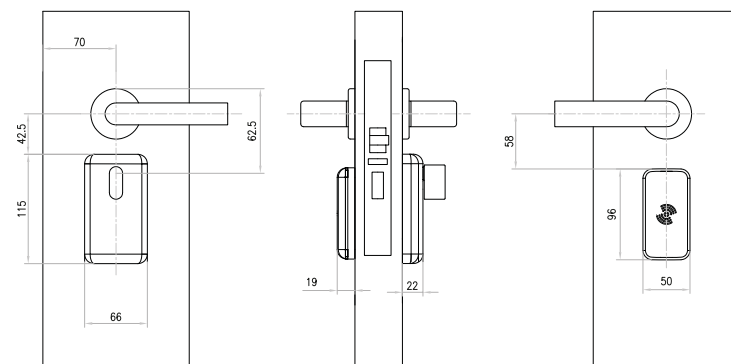
SMF 614



SMF 814



SMF DUO



LOCK FEATURES:

- Designed for optimal performance within student accommodations, residential and multi-occupancy buildings.
- Compatible with JELD-WEN 44mm fire doors
- The SMF 614 is perfect for retrofit schemes to replace mechanical key systems and outdated access control systems.
- The SMF 814 can utilise both ANSI & EURO mortise lock sets with a range of face plates and strike plates making it ideal for both retrofit and new build installations
- The SMF DUO is a secure, smart and fully encrypted lock set compatible with the NSP'S smart-phone Entry App for ease of use.

Note: SMART locking doorsets not suitable for PAS24/SBD applications.



42

SIZING A DOORSET

READYFIT™ STRUCTURAL & CLEAR OPENING SIZES

Door Leaf Size Imperial / Metric		Overall Doorset Size (mm)				Structural Opening Size* (mm)				Clear Opening Width (mm)		
Height	Width	MDF NFR / FD30 16mm Std. undercut		Hardwood FD60 19mm Std. undercut		MDF NFR / FD30		Hardwood FD60		MDF NFR	MDF FD30	Hwd FD60
		1981mm (6'6")	457mm (1'6")	2025	513	2045	547	2030	523	2050	557	400
1981mm (6'6")	533mm (1'9")	2025	589	2045	623	2030	599	2050	633	476	467	457
1981mm (6'6")	610mm (2'0")	2025	666	2045	700	2030	676	2050	710	553	544	534
1981mm (6'6")	686mm (2'3")	2025	742	2045	776	2030	752	2050	786	629	620	610
1981mm (6'6")	762mm (2'6")	2025	818	2045	852	2030	828	2050	862	705	696	686
1981mm (6'6")	838mm (2'9")	2025	894	2045	928	2030	904	2050	938	781	772	762
1981mm (6'6")	864mm (2'10")	2025	920	2045	954	2030	930	2050	964	807	798	788
1981mm (6'6")	914mm (3'0")	2025	970	2045	1004	2030	980	2050	1014	857	848	838
Metric 2040mm	526mm	2084	582	2104	616	2089	592	2109	626	469	460	450
Metric 2040mm	626mm	2084	682	2104	716	2089	692	2109	726	569	560	550
Metric 2040mm	726mm	2084	782	2104	816	2089	792	2109	826	669	660	650
Metric 2040mm	826mm	2084	882	2104	916	2089	892	2109	926	769	760	750
Metric 2040mm	926mm	2084	982	2104	1016	2089	992	2109	1026	869	860	850
1981mm (6'6")	1066mm (3'6" Pair)	2025	1125	2045	1159	2030	1135	2050	1169	975	957	-
1981mm (6'6")	1168mm (3'10" Pair)	2025	1227	2045	1261	2030	1237	2050	1271	1077	1059	-
1981mm (6'6")	1220mm (4'0" Pair)	2025	1279	2045	1313	2030	1289	2050	1323	1129	1111	-
1981mm (6'6")	1372mm (4'6" Pair)	2025	1431	2045	1465	2030	1441	2050	1475	1281	1263	-
1981mm (6'6")	1512mm (5'0" Pair)	2025	1571	2045	1605	2030	1581	2050	1615	1421	1403	-

*Note: Structural opening sizes include a 10mm width and 5mm height fitting tolerance.

App Doc M = BUILDING REGULATIONS Approved document M.



READYFIT™ GLAZING SPECIFICATIONS

Aperture	App Doc K	Actual visible glass area (mm) WxH	Top margin (mm)	Side margin (mm)	Distance between beads (mm)
	GC				
GC01	⊘	427x427	140.5	Central	-
GC04	⊘	120x730	140.5	140.5	-
GC05	✓	120x730 & 150x450	140.5	140.5	206
GC06	✓	120x1380	140.5	140.5	-
GC07	✓	60x1670	140.5	Central	81
GC08	⊘	195x195	140.5	Central	101
GC09	✓	427x1670	140.5	Central	-
GC10	⊘	480x885	140.5	Central	-
GC11	✓	120x1120	400.5	140.5	-
GC12	⊘	120x885	140.5	140.5	-
GC13	✓	378x240	195.5	Central	111
GC14	⊘	240x378	190.5	Central	131

Requirement 6 of Approved Doc K does not apply to dwellings.

GC = Clear glass.

SECUREFIT™ STRUCTURAL & CLEAR OPENING SIZES

Door Leaf Size Imperial / Metric		Overall Doorset Size (mm)		Structural Opening Size (mm)		Clear Opening Width (mm)
Height	Width	FD30 44mm (Swd Frame) 19mm Std. undercut		FD30 44mm (Swd Frame)		FD30 44mm
		Height	Width	Height	Width	
1981mm (6'6")	838mm (2'9")	2046	930	2051	940	772
1981mm (6'6")	864mm (2'10")	2046	956	2051	966	798
1981mm (6'6")	914mm (3'0")	2046	1006	2051	1016	848
Metric 2040mm	926mm	2105	1018	2110	1028	860

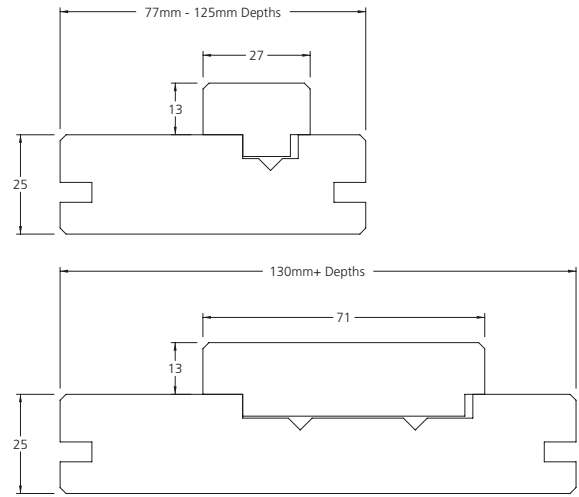
SECURESET STRUCTURAL & CLEAR OPENING SIZES

Door Leaf Size Imperial / Metric		Overall Doorset Size (mm)		Structural Opening Size* (mm)		Clear Opening Width (mm)
Height	Width	FD30 44mm 16mm Std. undercut		FD30 44mm		FD30 44mm
		Height	Width	Height	Width	
1981mm (6'6")	762mm (2'6")	2032	832	2037	842	689
1981mm (6'6")	838mm (2'9")	2032	908	2037	918	765
1981mm (6'6")	864mm (2'10")	2032	934	2037	944	791
1981mm (6'6")	914mm (3'0")	2032	984	2037	994	841
Metric 2040mm	826mm	2091	896	2096	906	753
Metric 2040mm	926mm	2091	996	2096	1006	853

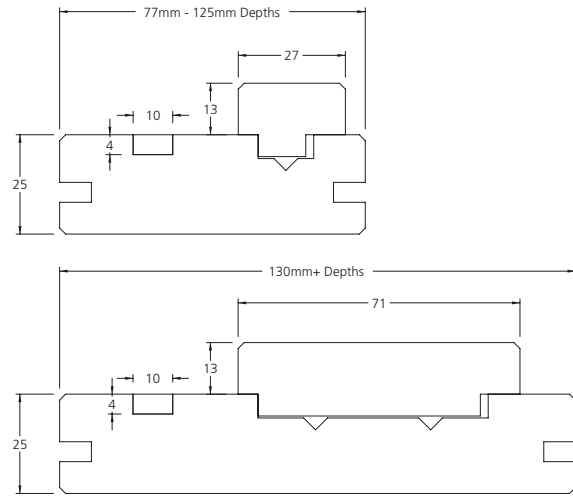
*Recommended structural opening sizes allows for a 5mm frame to wall gap, to be filled in accordance to the guidance contained within BS 8214. Larger frame to wall gaps may be permissible, providing that the guidance contained within the BS 8214 standard is followed.

DOORSET LININGS

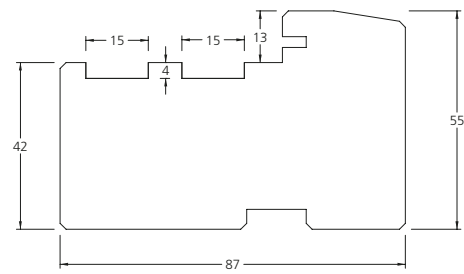
READYFIT™ LINING



READYFIT™ LINING FD30

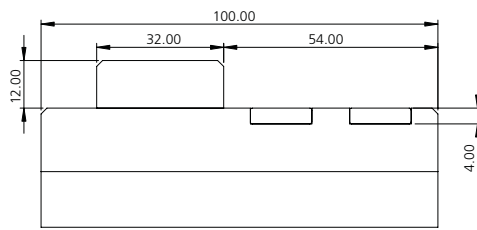


READYFIT™ LINING FD60

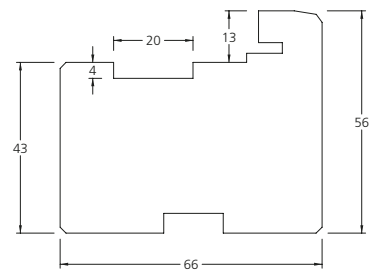


READYFIT™ LINING FD60

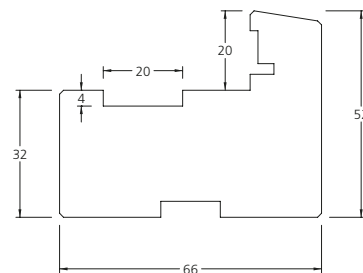
(Pairs only)



SECUREFIT™ FD30 FRAME



SECURESET™ FD30 FRAME



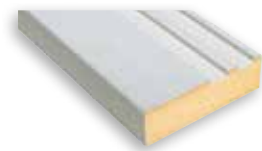
LINING OPTIONS FOR ALL READYFIT™ DOORSETS



25mm MDF lining & adjustable stop



25mm FD30 MDF lining, adjustable stop & intumescent strip



30mm FD60 MDF Lining, adjustable stop & intumescent strip



CASE STUDIES

GRYMES DYKE COURT, COLCHESTER

Grymes Dyke Court is located in Rogation Close, Stanway. There are 20 one-bedroom and 14 two-bedroom self-contained modern apartments located in a two storey building with two lifts.

Set in attractive gardens with a courtyard patio and seating area, a drying area, mobility scooter storage and a small number of parking spaces nearby for residents and visitors.

JELD-WEN was pleased to work with Harmony Fire to supply the Flat Entrance Doorsets for this scheme.

Made to measure SecureFIT Flat Entrance Doorsets in a contemporary, moulded 2-panel smooth Cambridge design. All the doorsets suppliers are fire-rated and security compliant for added tenant peace of mind. The doors were supplied in a range of colours with suited cylinders.



Project Address	Grymes Dyke Court, Rogation Close, Stanway, CO3 0YU
Client	Colchester Borough Homes
Customer (Subcontractor)	Harmony Fire
Status	Complete

JOHN LAMPON COURT, COLCHESTER

John Lampon Court is located in the Newton area of Colchester. There are over 30 self-contained modern apartments located in a modern two storey building with lift between floors.

All properties have access to a range of communal facilities including visitor guest rooms.

JELD-WEN was pleased to work with Harmony Fire to supply the Flat Entrance Doorsets for this scheme.

Made to measure SecureFIT flat entrance doorsets in a contemporary, moulded 2-panel smooth Cambridge design. All the doorsets suppliers are fire-rated and security compliant for added tenant peace of mind. The doors were supplied in a range of colours with suited cylinders.



Project Address	John Lampon Court, Smiths Fields, Colchester, CO1 2HP
Client	Colchester Borough Homes
Customer (Subcontractor)	Harmony Fire
Status	Complete

IMPERIAL WHARF, BROMLEY

The residential development at Bromley-by-Bow sits at the heart of the Greater London Authorities' Stratford Opportunity Area.

These new homes in Bromley-by-Bow, East London will form part of the most important regeneration schemes in East London since the Olympics. A key development featuring 1,2, and 3 bedroom apartments which are a short stroll from the River Lea.

Infrastructure investment across the area is already underway, including support for the delivery of new schools and expansion of existing ones, the extension, and expansion of healthcare facilities, and new and improved access to the Lower Lea Valley.

JELD-WEN were pleased to provide the interior doorsets for the apartments in Paint Grade Premium, primed white finish with satin hardware.



Project Address	Imperial Street, Bromley-by-Bow, E3
Client	Guinness Partnership
Customer (Subcontractor)	Henry Construction
Status	Complete



IMPORTANT INFORMATION

DELIVERY

JELD-WEN doorsets should arrive on site shortly before planned installation; this will avoid unnecessary damage through handling and general site conditions.

Products should be thoroughly checked when delivered to ensure no damage has occurred during transport.

Doorsets can be delivered in house plots, architraves and door stops are fully machined and packed with the door.



STORAGE

Doorsets should be stored in a cool, dry place and stacked level in a horizontal position with a sufficient gap below the stack to allow air circulation. Please note: do not store doorsets in buildings that are being plastered or have recently been completed.

DECORATION

If doors are supplied unfinished they should be decorated in accordance with British Standard Code of Practice BS6150: 2006 and BS8000 Part 5:1990. The stain or paint manufacturer's instructions must be followed.

All surfaces must be treated (sealed) at the same time to prevent distortion from moisture imbalance. A base coat paint primer is not a seal. MDF foil wrapped linings, architraves and side panels can be left unfinished, however, if you wish to decorate we recommend one coat of water based gloss or satin paint.

JELD-WEN internal joinery is NOT suitable for waxes, polishes, dyes and oils etc. Please refer to manufacturers instructions.

FITTING INSTRUCTIONS

Before installing any doorset, please ensure the structural opening is clear of any dust, debris and any old fixtures. All our fitting instructions for interior doorset products can be found on our website.

DECORATION

ReadyFIT™ and SecureFIT™ CAD drawings can be found on our website

MAINTENANCE

All hardware should be lubricated on a regular basis to ensure smooth and correct functioning. JELD-WEN doorsets can be cleaned using a damp cloth, no abrasive materials should be used as this can damage the face of the door.



GUARANTEES



JELD-WEN doorsets have a 10 year guarantee against manufacturing defects.



Factory finishing has a 5 year guarantee providing regular maintenance has been given to the door.



Hardware comes with a 1 year guarantee.

For full terms and conditions along with further information on guarantees please visit our website:





JELD WEN.

INTERIOR DOORSETS
0345 122 2891
ukdoorsets@jeldwen.com

SEE MORE AT
JELD-WEN.CO.UK